



CANSchedule V2.3

© 2009 Intelligent Media Consultants LLC.

Todd Fantz / todd.fantz@intelligentmc.com

Summary: CANSchedule is the companion application to the CAN DV “Player” application. CANSchedule allows the user to create, and modify clip running order schedules and to preview the clips in those schedules.

System Requirements: CANSchedule runs under Macintosh OSX and needs Quicktime to function properly. Macintosh OS9 and Windows 98+ versions may be possible if the need arises.

Connection Requirements: The CANSchedule software must either be running on the same machine as the CAN DV application, or must have network access to the “root” folder of the CAN DV machine (where the schedules and clips are located). The application/user must have read/write authorization to this directory.

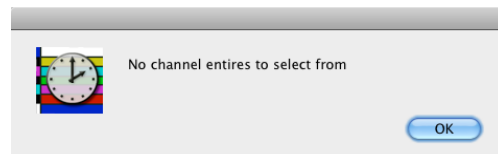
I. Installation:

Make a new folder on the computer you want to run the application on. Copy the “CANScheduleX” or “CANSchedule” application to that folder. Make an alias or shortcut to the application and place it on the desktop, or other convenient spot from which to launch the application.

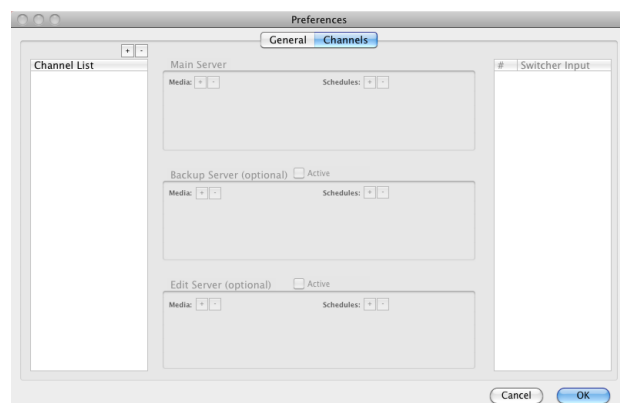
II. First Run / Set Up and Associated Files & Folders

The first time you run CANSchedule you will need to tell it how many “channels” you are managing, normally “1”, and where the media and schedules for those channels are located.

If this has not been setup correctly you will receive a message like this... and until the channels are set up you may receive periodic notices that the schedule cannot be saved automatically.

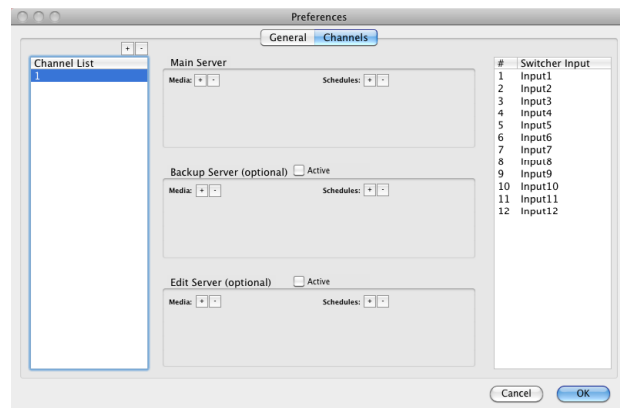


To configure a channel, go to “Preferences” and select the “Channels” tab. On first run the entries will be blank. To create a new channel, press the “+” button above the “Channel List”, then double click in the new entry to name your channel... in the example here I have just called it “1”



You can ignore the default “Switcher Input” names unless you are running CAN DC Automation to control a switcher, in which case, please refer to the CAN DC manual.

After you label a channel you will need to set the “Main Server” paths at minimum. To do so, click on the “+” button next to “Media” under “Main Server” and point that to the root folder containing your clips folders. Remember that clips need to be in subject/category folders, so you will need to select the folder that contains those subject/category folders, not a folder that contains just clips. Repeat the process for the “Schedules” section under “Main Server”. For Schedules you want to select the folder that will contain the Schedules folder... not the actual Schedules folder itself. This is a small but important distinction.



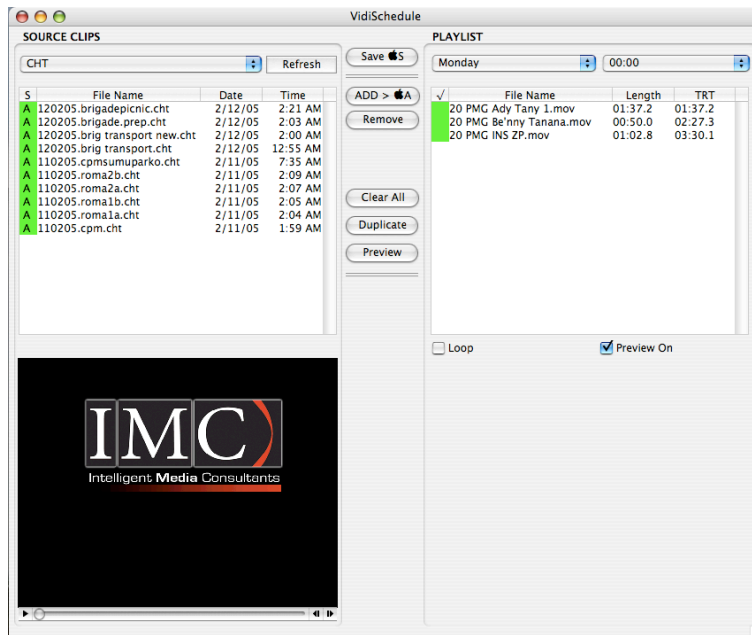
The application has the feature of keeping two servers schedules in sync if needed, so you can optionally set paths for a “Backup Server” and check on the activation, if you have a backup server. If you only have one server then you can leave the “Backup Server” paths empty.


You also have the option of using an “Edit Server”. An Edit Server would be a source drive or volume of material, the application will show Edit Server material as being available to be added to a schedule, but will copy the files over to the air server (and backup if configured) when they are added to a schedule. If you do not want to use an Edit Server just leave the section blank.

At this point the application will create a sub folder labeled “Schedules” in the working directories (if they do not already exist). It will then populate the “Schedules” folder with folders for the days of the week (English only at this point).

III. Basic Operation: The Main Window

The first screen you will see should look something like this... the lists may be empty if you have no content on your air/edit servers.



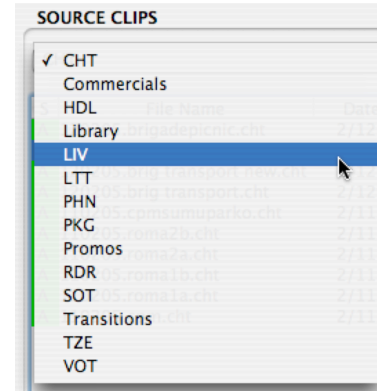
You can resize the window by dragging the bottom right hand corner of the window. You can change the “split” between the right and left column by dragging the  icon left to right.

The application can be seen as working left to right... source to schedule... so lets start by looking at the left side.


Source Clip List:

-By default the left side will list the contents of the first folder on the air server. To change content folders, select the popup under “Source Clips”

-In the source clips list you can select more than one clip from a single folder by “shift-clicking” to select a contiguous range, or “apple-clicking” to individually select clips that are scattered about the list.





-Once you have one or more clips selected you add them to your schedule by clicking the “Add >” button or pressing the “Apple-A” key combination. If the clip is only on the Edit Server adding it to a schedule will initiate a file copy to the Air Server.

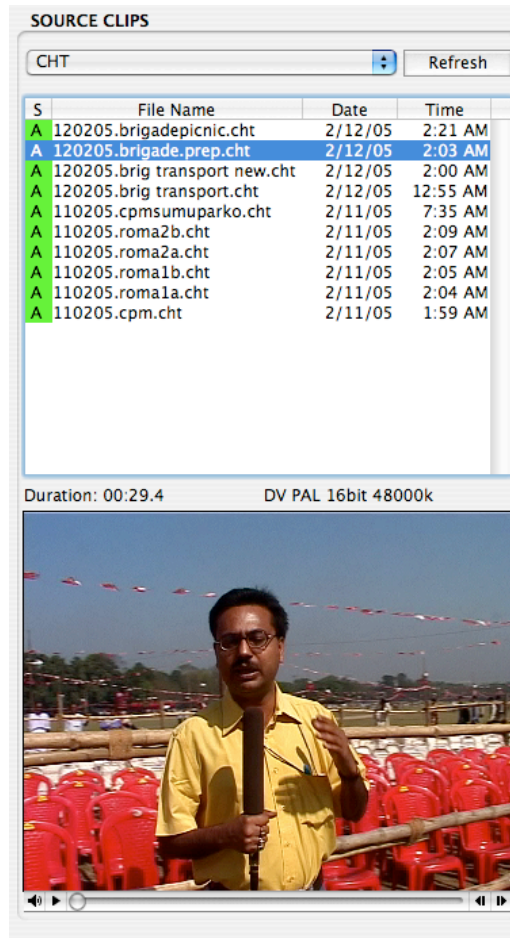
-The source clip list will automatically refresh on an interval. You can also manually refresh the list by clicking the  button.

-A green “A” means that the selected clip is on the designated Air Server. A red “E” means the clip is only on the Edit Server. This means that CAN DV could not play the clip immediately... it needs to be moved to the Air Server... which will be done automatically when you press the “Add>” button

-The source clip list defaults to sorting with the most recent clip(s) at the top. You can also sort alphabetically by clicking on the “Name” column header. When the list is refreshed, either manually or automatically, it will again get sorted with the most recent clips at the top.

-When you select a clip from the source bin, or one already in a schedule, the application will attempt to load it into a preview area below the list. At this point it also checks the format of the video clip. You will get an error message if the clip is not in the format selected under the “Settings” menu.

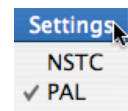
You can use the play button  to play the clip and/or grab the shuttle tab  to scan through the clip.



The screenshot shows a window titled "SOURCE CLIPS" with a "Refresh" button. Below is a table of clips:

S	File Name	Date	Time
A	120205.brigadepicnic.cht	2/12/05	2:21 AM
A	120205.brigade.prep.cht	2/12/05	2:03 AM
A	120205.brig transport new.cht	2/12/05	2:00 AM
A	120205.brig transport.cht	2/12/05	12:55 AM
A	110205.cpmsumuparko.cht	2/11/05	7:35 AM
A	110205.roma2b.cht	2/11/05	2:09 AM
A	110205.roma2a.cht	2/11/05	2:07 AM
A	110205.roma1b.cht	2/11/05	2:05 AM
A	110205.roma1a.cht	2/11/05	2:04 AM
A	110205.cpm.cht	2/11/05	1:59 AM

Below the table, it shows "Duration: 00:29.4" and "DV PAL 16bit 48000k". The preview area shows a man in a yellow shirt standing in front of red chairs.

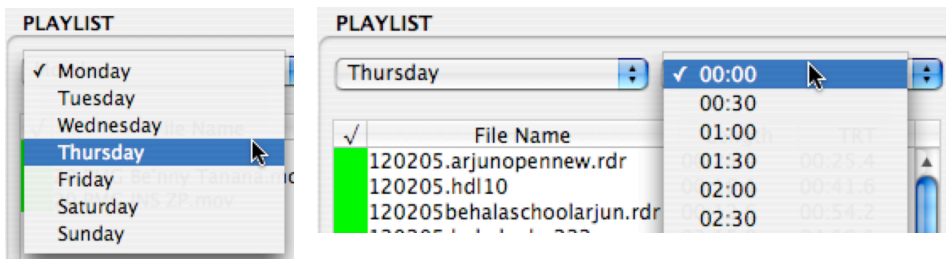


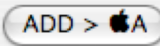
The "Settings" menu is open, showing "NSTC" and "PAL" (checked).

Playlist/Schedule Clip List:

The right hand side contains the schedules at the playout application will use to sequence clips. At startup the application will load the first schedule from the first day, usually Monday 00:00 or midnight. Schedules are arranged in half hour increments. You do not have to fill in each half hour... the playback application will have a procedure on what to do when it cannot find a schedule.

To work with a different schedule, just select the desired schedule date and time from the popup menus under "Playlist".



- As mentioned before, to add a clip to a schedule, you select it in the source clip list and either double click it or press the  button. The clip will be added into the schedule below the currently selected schedule line.

-The last two columns in the list shows the duration of the clip and the total running time at that point of your "show".

- To rearrange items in a schedule you drag and drop them.

- To save a schedule you can either click the "Save" button, type "Apple-S" or move to another schedule day/time. NOTE: Saving a schedule does not make it appear on the player application. It either must be "Reloaded" there, or the player in auto mode will load the schedule at the appropriate time.

-The "Loop" check box above the Playlist preview specifies if a schedule will load by default in "loop" mode or not.

-The "Preview" check box above the Playlist preview determines if a preview of the select clip will be loaded. If it is unchecked, you will see no preview video below the list. This is useful if you wish to do a lot of reordering in the schedule and do not wish to wait for each selected clip to preview.

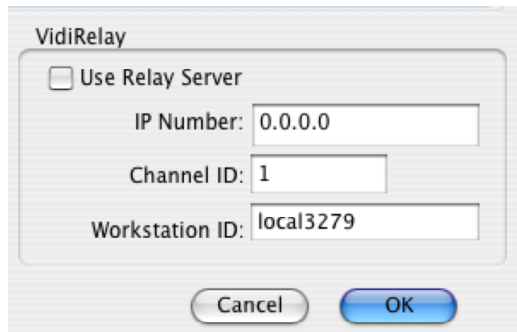
-The "Clear All" button in the center column will remove all items from a schedule.

-The "Duplicate" button will bring up a dialog window allowing you to duplicate the current schedule to another day/time spot. This is useful for rolling shows over and then making changes.

-The "Preview" button will attempt to compile a single clip from the current schedule. It will show this to you in a separate window. This allows you to check some of the continuity between stories and see how your show will look in its entirety.

IV. Advanced Operation: Remote control of CAN DV

Overview: VidiSchedule has the ability to remotely monitor and control a CAN DV system, which can contain one or more CAN DV client applications which have been set up to be "in sync". The VidiRelay application is necessary for this feature to function. Please see the VidiRelay documentation on setting that up correctly. If VidiRelay is running then you may configure VidiScheduler to use it by opening the "Preferences" submenu under the "Settings" menu. You will get a "Preferences" window that in the bottom right hand corner looks something like this...

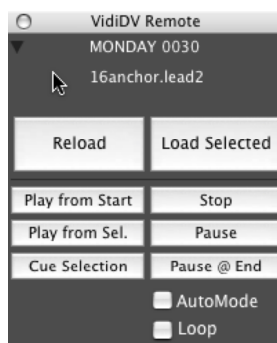


To remote control one or more CAN DV applications you need to put a check in the "Use Relay Server" after entering the IP number of the computer running "VidiRelay". By default the "Channel ID" is set to "1". You only need to change this if you are trying to run multiple unique channels through the same "VidiRelay" application, which is very

rare. The "Workstation ID" must be unique for the computers using the system. It defaults to the MAC ID of the network card, so it should be very rare that you would need to change it.

Once this has been set up, the application will attempt to connect to the VidiRelay application. If a connection is made, there will be a green box in the upper right hand corner of the main window. If the connection fails, or drops at any point, the box will turn red. If a connection is down, the application will try on a regular interval to reconnect to the VidiRelay application.

If you are connected to a system that has an active CAN DV application on it, you should get an update when you connect. This will make a small window visible that tells you the current schedule and clip. There is a small triangle on this window that will reveal the rest of the remote control options.



-The **Reload** button, tells CAN DV to Reload the schedule that it currently has loaded... this is not necessarily the same schedule as CANSchedule is currently looking at.

-The **Load Selected** button tells CAN DV to load the schedule that CANSchedule currently has open.

-The **Play from Start** button tells CAN DV to play its currently loaded schedule from the beginning.

-The **Play from Sel.** Button tells CAN DV to try to start playing from the currently selected clip in the CANSchedule rundown. Obviously if CAN DV does not have the same schedule loaded as is shown in CANSchedule then this will have no effect, so make sure you are working with the same rundown in both locations.

-The **Cue Selection** button tells CAN DV to try and cue up the clip that is currently selected in CANSchedule. Again, both programs must have the same rundown loaded for this to have any effect. When cued up, click the "UnPause" button to continue playing the cued clip.

-The **Stop** button tells CAN DV to stop.

-The **Pause** button tells CAN DV to pause. When CAN DV is in pause mode this button will change to **UnPause**. Guess what it does then.

-The **Pause @ End** button tells CAN DV that it should pause at the end of the currently playing clip. When the end of a clip is reached the Pause button will change to UnPause. Note: This state toggles on and off... so once it is "ON" it will stay "ON" and each clip will pause at the end, until this is turned off. This is a handy way to get into live segments without running into the next video clip...

V. Suggestions

-Work on shows in advance... the less "messaging" with the rundown that is on air the better.

-Roll schedules over with the dupe function. The next show is likely to be mainly like the last show, so dupe it over to the next half hour and make changes there... don't waste your time by starting from scratch.